

Installation Guide

Specification

The following are the minimum and recommended specifications to run **Docsvault Professional**:

Requisite	Required Minimum	Recommended Minimum
Processor	Pentium 500Mhz	Pentium III
Memory	128 MB RAM	256 MB RAM
Graphics Display Resolution	800*600	1024*768
Operating system	Win 2k	Win 2k, Win XP
.NET Framework	Version 1.1.4322	Version 1.1.4322 (V2.0 not supported)

Note:

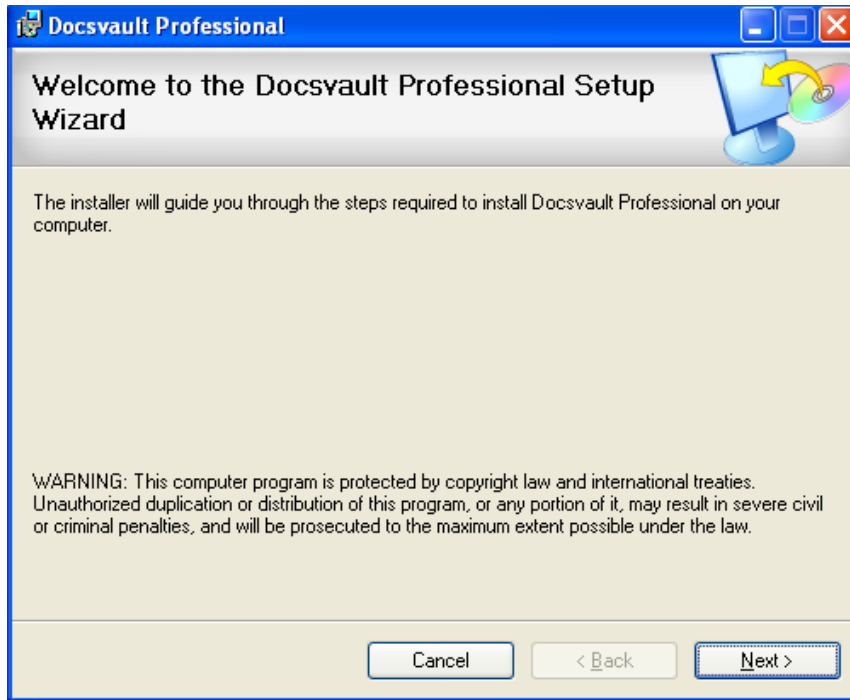
- The Microsoft .Net Framework is available for free from their download center website," www.microsoft.com/downloads/". Once on their website, look for the ".NET Framework Version 1.1 Redistributable Package"

Installation

This section describes how to install Docsvault Professional Edition on your computer running Microsoft Windows 2000 or higher. To install and use Docsvault Professional properly, you must have administrative rights.

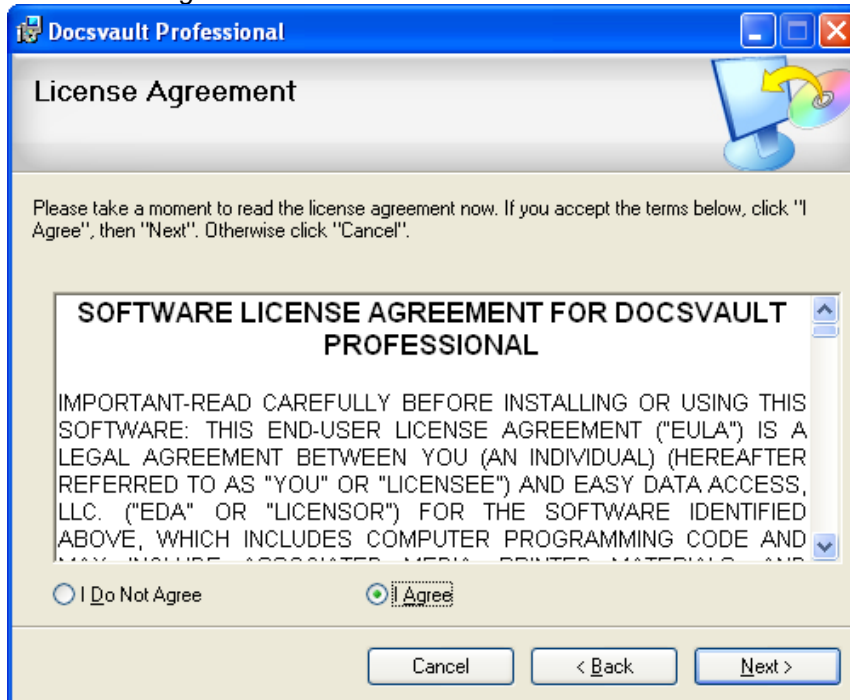
Step 1 - Initiate Installation Wizard

Insert the CD in your CD/DVD Drive. After a short moment, the **Installation Wizard**'s welcome menu should automatically appear. Click on **Next** button to view the '**License Agreement**' page.



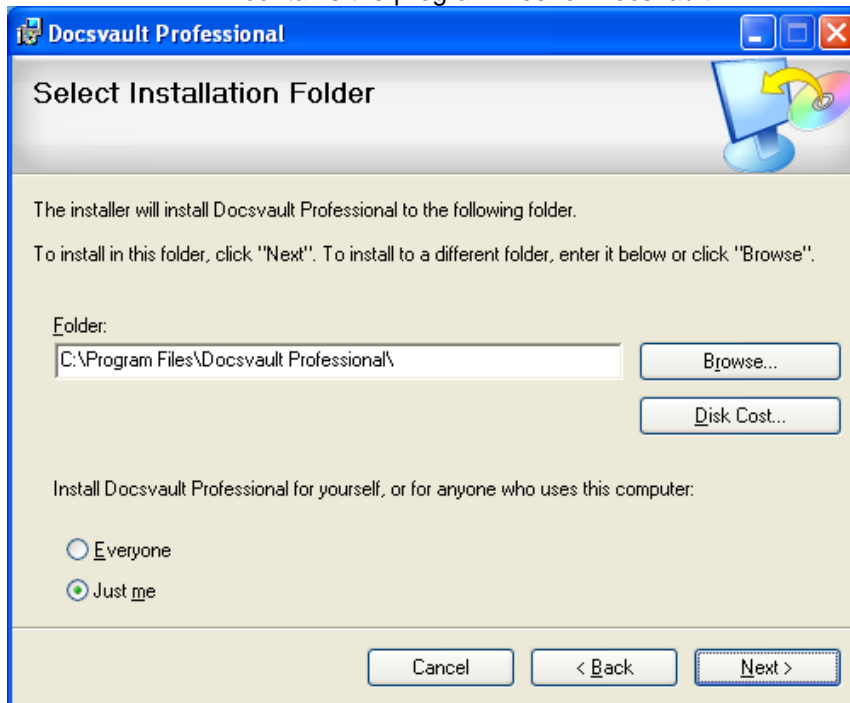
Step 2 - License Agreement

Shown below is the '**License Agreement**' page. Read the License Agreement carefully. If you agree with it, click on the **I Agree** radio button and click **Next** button.



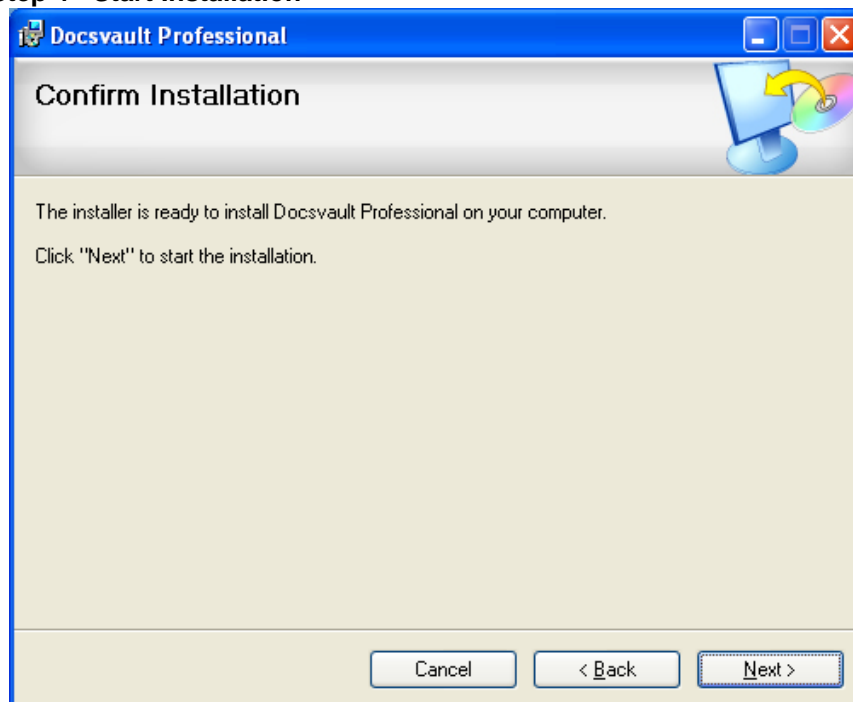
Step 3 - Select Installation Folder

Installation Folder contains the program files for Docsvault.



- A default path for installation is automatically chosen. You can select a different location by clicking on **Browse** button
- Clicking **Disk Cost..** button, gives you statistics of the total disk space available in the local drive and the required space by Docsvault. Accordingly, you can decide the appropriate drive for the installation of Docsvault.
- Click on **Next** button to go to the '**Confirm Installation**' page.

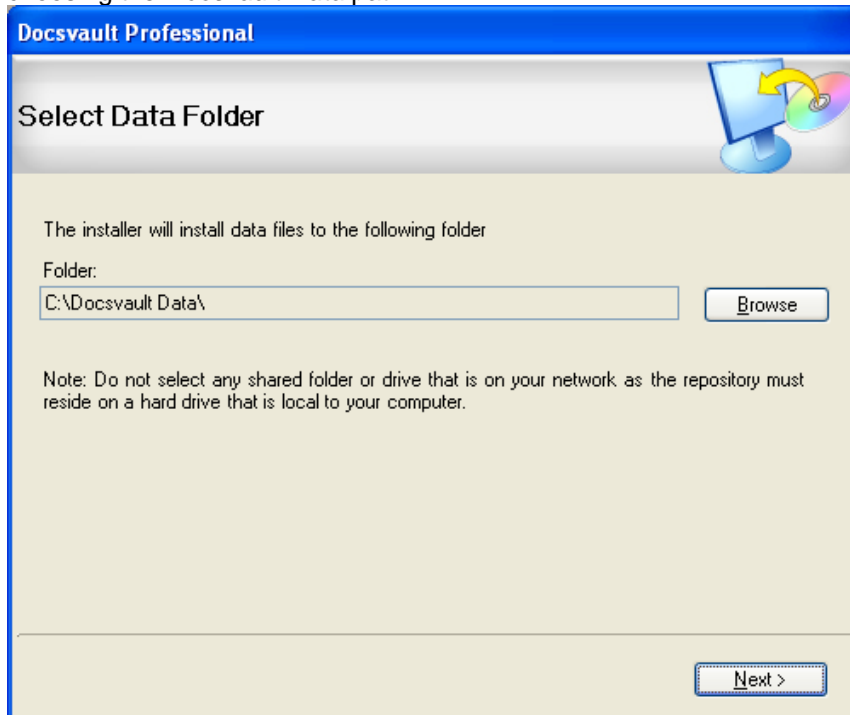
Step 4 - Start Installation



Confirm Installation page is confirmation before you start installing Docsvault Professional. In case you want to change the installation location, you can go back and revise the destination. If you are sure about installing Docsvault, click **Next** button to start the installation process.

Step 5 - Select Data Folder

During the installation procedure, you will be asked to select a data folder. Docsvault automatically creates data folder with the name **Docsvault Data** to save your documents. By default, Docsvault selects the **C: Drive**. You can select a different path by clicking on **Browse**. Click on **Next** button when you are done with choosing the *Docsvault Data* path.



Warning:

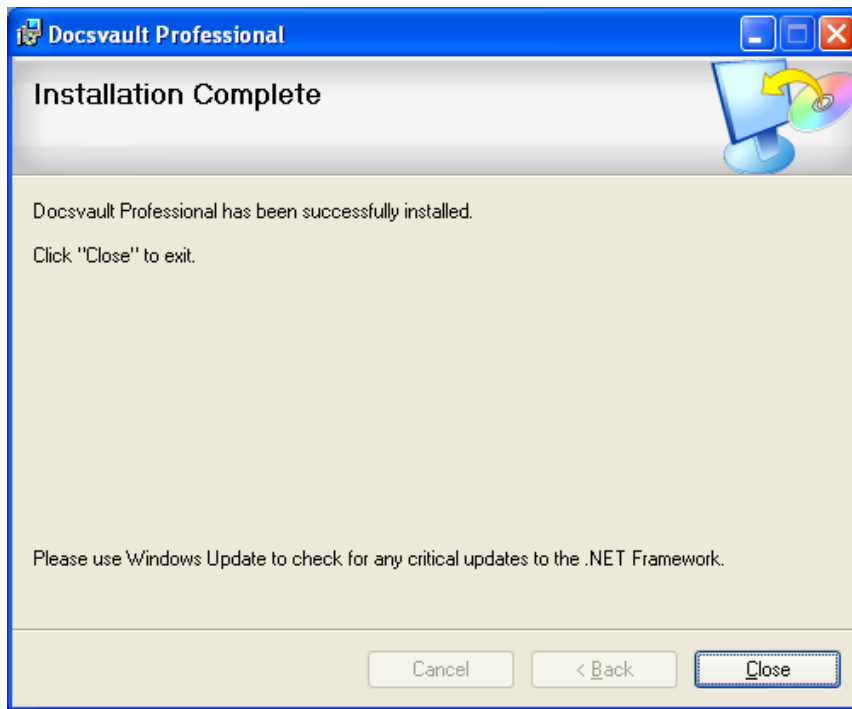
- You cannot create a repository on a network location. Select the drive that is physically connected to your computer.

Note:

- Docsvault uses Firebird SQL server as its backend which is usually installed with Docsvault. However, if your PC already has Firebird installed, then Docsvault will attempt to use the current Firebird installation.
- If no other application is using the Firebird server, please uninstall it and then reinstall Docsvault to ensure a smooth Firebird installation by Docsvault.

Step 6 - Close Installation Wizard

On completion click **Close** button.




You are now ready to use **Docsvault Professional Edition!**

Launching and Registering Docsvault

Before learning about all of Docsvault's features in detail, you need to get introduced to the Docsvault user interface. The first and foremost thing is to get the Docsvault Professional interface on the screen. The next topic will cover several ways of launching the Docsvault application. You will also be introduced to Docsvault's main window. After that, you will learn the basic operations like how to create cabinets and folders, importing-exporting files, searching documents, etc.

Launching Docsvault Professional

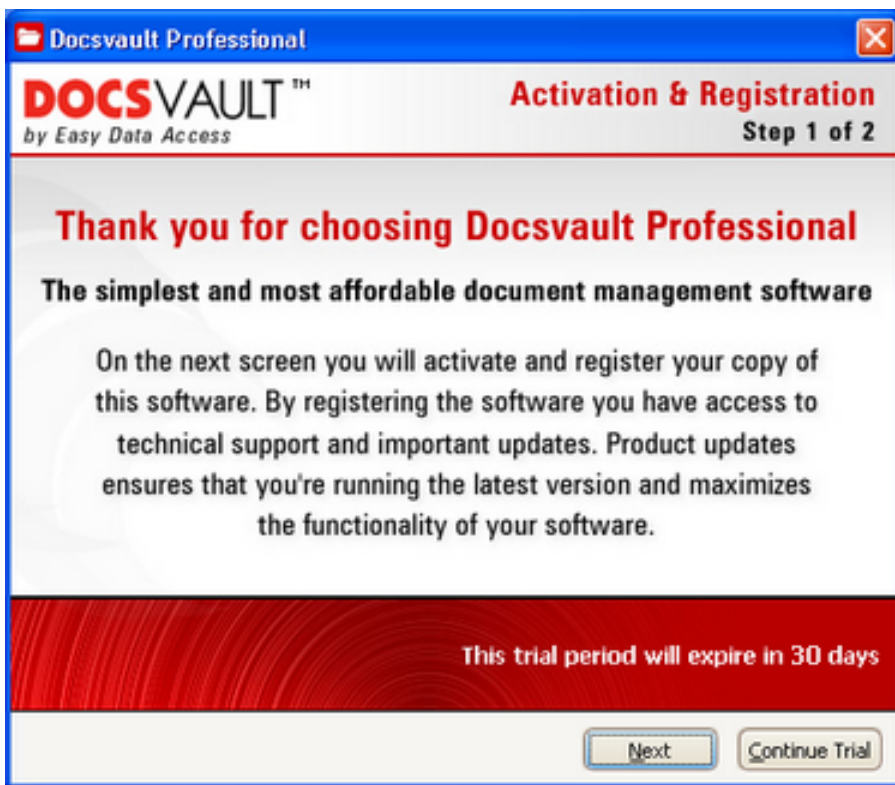
You can launch the Docsvault application in one of the following ways:


- **Using Windows Start menu:** Click on *Start >> Programs >> Docsvault Professional*
Or
- **Using Desktop Icon:** Double click on 'Docsvault Professional' icon  on the Desktop.
Or
- **Using System Tray Icon:** By default Docsvault Professional will automatically start up in the system tray when Windows starts up. You can display the main window by double clicking on this system tray icon shown below.



Registering Docsvault

1. The first time you launch Docsvault, you will be presented with a registration form as shown below



2. Click on  to view the next page of the registration form.

Docsvault Professional

DOCSVAULT™
by Easy Data Access

Activation & Registration
Step 2 of 2

Activation Key

— — — —

Registration Fields with * are required

First Name: *

Last Name: *

Country: *

Profession: *

Email: *

Where did you hear about us?: *

Specify: *

This trial period will expire in 30 days

[Get Key Now](#) [Support](#) [Activate](#) [Continue Trial](#)

- Enter the 25 character *Activation Key* provided with the retail box you have purchased. If you have purchased Docsvault online, we will send you an email with the *Activation Key*.
- Provide your first name, last name, country of residence, profession and your email id. So that we can focus our resources better we ask you to specify how did you hear about us.
- Now, make sure you are connected to the internet and click on [Activate](#). This will activate your copy of Docsvault Professional edition by registering it in our server.



Note:

- If you are using a firewall application, allow Docsvault to access the internet for activation process which is an one time process.

Technical Support

For any product related or general customer service questions that may arise, please use our online Technical Support or contact us by email at: Support@edaUSA.com

Easy Data Access

5988 Mid Rivers Mall Drive
St. Charles, MO 63304

Web Site: <http://www.Docsvault.com>
E-mail: Support@edaUSA.com